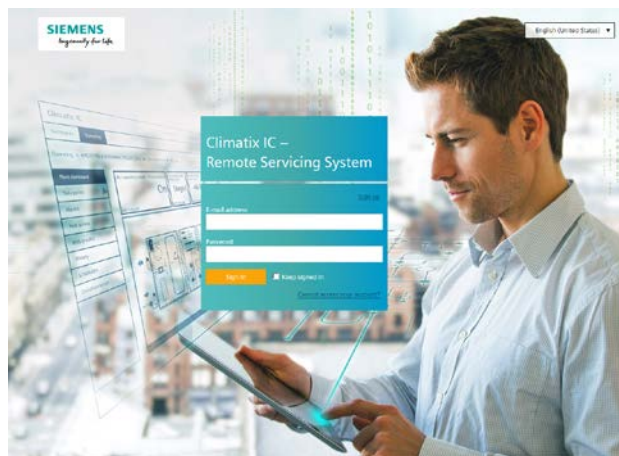


Climatix™

Climatix IC20.7 (Deployment 7)

Cloud based Remote Servicing System



With products IC20.500, IC20.400, IC20.300 and IC20.100

- Open, cloud-based solution for remote servicing, monitoring, alarm management, firmware upgrade and diagnostics, anywhere 24/7.
- Tailored to meet the needs of commercial, light commercial and residential fields of application and suitable for use with chillers, AHUs, RTUs, district heating, heat pumps, burners and boilers.
- Full support of languages and units (metric/imperial).

Devices

The Climatix IC cloud-based remote servicing system is available for:

- Climatix controllers with integrated IP port.
- Albatros2 RVS/LMS or RVD200 controllers that are connected to an OCI Gateway or OZW web server.

Cloud-based application

- Climatix IC requires no separate software installation.
- You connect to Climatix IC using an HTML5-compatible web browser at <https://www.ClimatixIC.com>.

Climatix IC highlights

- Dashboards can be configured to the specific role for OEMs, service technicians, plant operators, and owners.
- Web graphics visualize devices and equipment.
 - Dedicated access per user role (e.g. OEM, service technician, owner).
 - New: Multiple web graphics per user.
- Advanced diagnostics and visualization of historical cloud data (multiple trends in parallel).
- Applications Programming Interface (RESTful API) for third party integration (clouds, applications, business software).
- Security certification complies to CSA SAL-2. Geo-redundant data storage within the EU.

Comparison of billing products

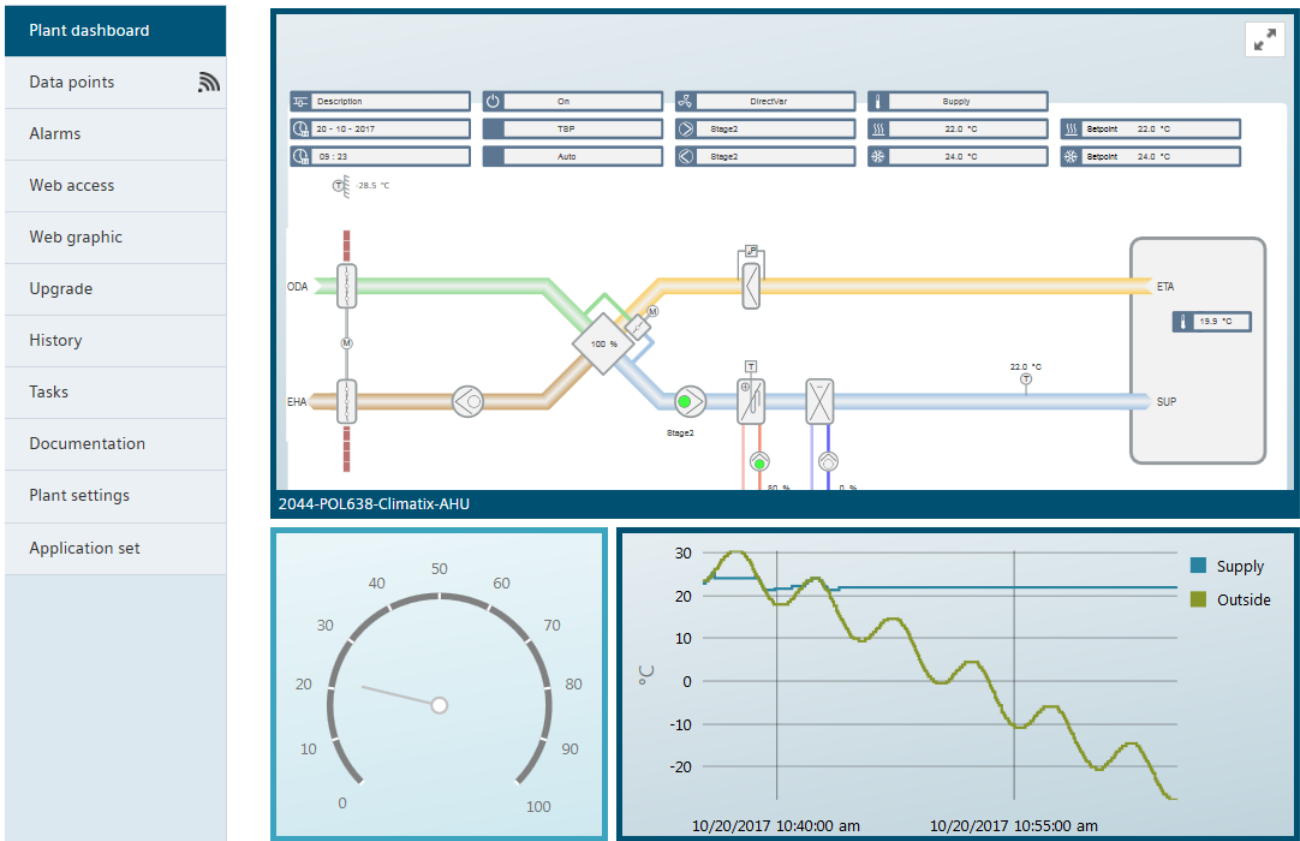
Function	IC20.520	IC20.500	IC20.400	IC20.300
Hardware	Climatix POL controllers with integrated IP port.			Albatros2/RVD controllers with OCI670/OZW672
Typical applications	<ul style="list-style-type: none"> • Chillers • Commercial AHUs • RTUs • District heating, substations 		<ul style="list-style-type: none"> • Compact AHUs • District heating, residential applications • Heat pumps • Boilers 	<ul style="list-style-type: none"> • District heating • Heat pumps • Boilers
User accounts	Per contract			
Trend data points *	500	500	50	**
Storage entries per trend object	500'000	50'000	50'000	**
Entries in the system history	50'000	5'000	5'000	**
Alarm entries	500			
Device API	via Cloud API			included

* Typically analog values

** Data points are stored in OCI/OZW

Function	IC20.100 (Get connected)
Hardware	Climatix-POL or Albatros2/RVD200 with OCI670/OZW672
Use	Static overview: <ul style="list-style-type: none"> • Your plants on Google Maps • GPS coordinates • Connection status • Monitoring of system settings and data points • Parameter files (POL controllers only)

Dashboard displays the important details



Intuitive and modern menus enhance day-to-day work

Climatix IC TEST_CLIMATIX English (United States) goelzer@bluewin.ch

Dashboards | Operating | Application sets | Administration

Administration ▶ Plants

Plants | Users | Tenants | User Roles | Pre-Register

Assigned | Unassigned | Activate Plant

Search

Name		Description	Application Set	Address	City
DH Tino Dev		FS 62254-POL638	POL638	Fengzhi Eas...	BEIJING
FS AHU 3.3 Dev		FS AHU 3.3 TEST RACK Tino D...	Climatix AHU	Zählerweg 5	Zug
GTE Tino Dev		54807-POL687	Climatix AHU	1000 Deerf...	Buffalo Grove
GTE-VVS11		POL687	GTE-POL687-VVS11	Gubelstr.22	Zug
myTestplant		myTestplant_Descrip	myApplicationSet	22 Gubelstr...	Zug

10 | 20 | 50 < 1 >

Menu functions

Menu	Function	Brief description
Dashboards		Your plants on Google Maps
	Map with KPIs	Available plants with key performance indicators (can be configured)
	Overview	Plant dashboard (can be configured) as tiles on all plants
Operating		Overview of plants
	Plant dashboard	Plant dashboard (can be configured via dashboard) as tiles for one plant
	Data points	Data point access including data history viewer Multitrend viewer (on the dashboard) for history values
	Alarms	Plant alarms and alarm history
	Web access	Access to local web server, for example HMI4Web
	Web graphic	SVG-based web graphics with access appropriate to the role
	Upgrade	Remote firmware upgrade service, with scheduler
	History	History for setpoints and system commands
	Schedules	Settings for scheduler and calendar
	Tasks	Overview of active tasks and task history
	Documentation	<ul style="list-style-type: none"> Available documentation for the assigned application set New: Individual plant files (e.g. service log files)
Application sets		Overview of available application sets
	Administration	Basic data, alarm and security level settings
	Plant file	Linked applications and BSP
	Miscellaneous files	Linked documentation
Administration		Overview of assigned/unassigned plants
	Plants	Manage assigned/unassigned plants Define plant users, alarm messages and replace controllers
	User	Create administrators and assign administrator roles
	Tenants	<ul style="list-style-type: none"> Edit tenant settings, including the distribution key New: All billing information
	Plant roles	Define plant roles
	Pre-register	Preregister multiple plants (e.g. at OEM factory) using an individual activation key

Non-menu functions

Subtenants

- Set up and manage subtenants, for example, to reflect regions.

Data traffic

- Track incoming and outgoing data traffic (measured in Mbyte/time frame).
- Track "Cloud Item" (item corresponds to Scope Item) updates.

Commissioning

- Save plant parameter files to the cloud

Cloud API

- Default RESTful API (Representational State Transfer)
- Access to the cloud data and management of plants and tenants.
- Uses HTTP queries (GET, PUT, POST and DELETE). The data is represented in JSON.
- A free, limited starter product is available. Includes all APIs.
- Registration for developers at <https://portal.api.climatixic.com>.
- Access to Device API via Cloud API.

Menu functions

Menu	Function	Brief description
Dashboards		Your plants on Google Maps
	Map with KPIs	Available plants with key performance indicators (predefined)
	Overview	Plant dashboard (can be configured) as tiles on all plants
Operating		Overview of plants
	Alarms	Plant alarms and alarm history
	Web access	Access to the plant. Corresponds 1:1 to direct access (including trend, plant diagrams, and document management)
	Documentation	Documents for an individual plant or all plants within a tenant space
Application sets		
	Administration	Setup documentation for all plants in the tenant area
	Miscellaneous files	Upload documentation (web links or download)
Administration		
	Plants	Manage assigned/unassigned plants Define plant users, alarm messages and replace controllers
	User	Create administrators and assign an administrator role
	Tenants	Edit tenant settings, including the distribution key
	Plant roles	Define plant roles
	Pre-register	Preregister multiple plants (e.g. at OEM factory) using an individual activation key

Non-menu functions

Subtenants

- Set up and manage subtenants, for example, to reflect regions.

Remote Tool Access

- Remote Tool Access establishes a secure tunnel connection to the web server via Climatix IC. The connection is used for tool access (e.g. ACS790).

Device API

- Device API means remote access to data on OCI670/OZW672.
- Standard RESTful API (Representational State Transfer)
- Management of plants and tenants.
- Uses HTTP queries (GET, PUT, POST and DELETE). The data is represented in JSON.
- The cloud API can also be used for cloud functions (see Function list POL controllers)
- Please contact your local Siemens partner if interested.

Billing products for POL controllers with integrated IP port.

Product	Settlement	Type	Billing modalities
IC20.520	25 credits	Credit	25 credits per month and assigned controller are deducted from your account balance.
IC20.500	20 credits	Credit	20 credits per month and assigned controller are deducted from your account balance.
IC20.400-50	1,926 credits	Bundle	Annual invoicing. Entitlement for up to 50 assigned controllers.
IC20.400-200	7,704 credits	Bundle	Annual invoicing. Entitlement for up to 200 assigned controllers.
IC20.400-1000	38,520 credits	Bundle	Annual invoicing. Entitlement for up to 1,000 assigned controllers.

Billing products for Albatros2 RVS, LMS controllers or RVD200 controllers with a connected web server OCI670/OZW672

Product	Settlement	Type	Billing modalities
IC20.300-50	720 credits	Bundle	Annual invoicing. Entitlement for up to 50 assigned controllers.
IC20.300-200	2,880 credits	Bundle	Annual invoicing. Entitlement for up to 200 assigned controllers.
IC20.300-1000	14,400 credits	Bundle	Annual invoicing. Entitlement for up to 1,000 assigned controllers.

Billing products for POL6xx controllers or Albatros2 and RVD200 controllers ("Get Connected")

Product	Settlement	Type	Billing modalities
IC20.100	1000 credits	Credit	No monthly billing. A one-time expense is billed for set up, a 2-hour training session, and customer support.



Additional KPIs for billing products

You learn additional details and key performance indicators as part of the initial training (onboarding).

Ordering

Please contact your local Siemens representative to order.

Order using the following order numbers once you come to a business agreement on your needs:

Type	Order number	Description
POL0L2.00/STD	S55-693-L120-A100	1 credit for Climatix IC20



The first 4 months are free as a pilot phase. You can become familiar with the product and exchange information as needed with the Climatix IC team.

Product documentation

Title	Type of document	Document ID
Documentation		
Climatix IC: Remote servicing (with POL controllers)	User's guide for service and end user	A6V10912669
Climatix controllers: POL687..	Data sheet	Q3903
Climatix controllers: POL63..	Data sheet	Q3230
Climatix controllers: POL6x8...	Data sheet	A6V10990076
Climatix IC: Remote access with OCI670 and OZW672	User's guide for service and end user	A6V11269223
Web server OZW672	Commissioning instructions	C5712
Gateway OCI670	Commissioning instructions	A6V101022140
Videos		
Climatix IC on Youtube	https://www.youtube.com/watch?v=5_NuNjhyHyg	
Specific user roles in Climatix IC (Youtube)	https://youtu.be/gtZJ9AwfLe0 (German) https://youtu.be/kiPp014jrZA (English)	

The portal provides comprehensive security, e.g. data security, security data storage, and reliable data transportation.

- Penetration tests conform to CSA SAL-2.
- The security certificate is based on SHA-256 encryption between the controller and the cloud as well as between the cloud and the web client.
- All connections are encrypted (HTTPS) to prevent tapping into the line and man-in-the-middle attacks.
- Geo-redundant data storage within the EU.

Issued by
Siemens Switzerland Ltd
Building Technologies Division
International Headquarters
Gubelstrasse 22
CH-6300 Zug
Tel. +41 58 724 2424
www.siemens.com/buildingtechnologies

© Siemens Switzerland Ltd, 2017
Technical specifications and availability subject to change without notice.